



Hi, thanks for your purchase of the Forex Detector, please follow the instructions below to set up your system. This system must be run only on the Eur/Usd and only on the 30 minute timeframe. If you are having trouble setting up the system please take a look at our troubleshooting section at the bottom of these instructions, these list most of the common setup problems and also the fixes.

SETTING UP YOUR SYSTEM

O.K so by now you should have your metatrader brokers account, if not you can download a demo version here <https://secure.ibfx.com/accounts/opendemo.aspx>

once you have downloaded and installed your system click on file - open account then follow the instructions and you will have your demo account set up which you can use to test the system with play money.

So once you have your metatrader account set up you can find our easy to follow set up videos below

Unzipping your detector –

<http://www.forexdetector.com/videos/video2/index.html>

Setting up your .ex4 file -

<http://www.forexdetector.com/videos/placingexpert/index.html>

Attaching the forex detector robot to the chart -

<http://www.forexdetector.com/videos/attachingtochart/index.html>

Changing your lot sizes –

<http://www.forexdetector.com/videos/changinglotsize/index.html>

we have also included written instructions below.

WRITTEN SETUP INSTRUCTIONS.

First you will need to unzip the forex detector folder that you have just downloaded, to do this simply right click on the folder and click 'extract here', if you do not have any unzipping software installed you can download it for free here <http://www.rarlab.com>

Once you have unzipped the files you will be left with a forex detector folder on your desktop, double click into this folder and you should be presented with 2 files. One will be these instructions and the other will be the forex detector file.

Now follow the steps below to complete your forex detector installation.

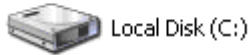
1. Go to the start button on your desktop (bottom left)



2. Click to 'my computer'



3. Double Click 'local disk C:'



4. Double click Program files



5. Now navigate to your metatrader program i.e C:/programfiles/metatrader and double click the metatrader program.



6. Now navigate to the 'experts folder' C:/programfiles/metatrader/experts and double click



7. You will now have the experts folder open which you need to drag and drop the ForexDetector.ex4 file from your desktop into it.



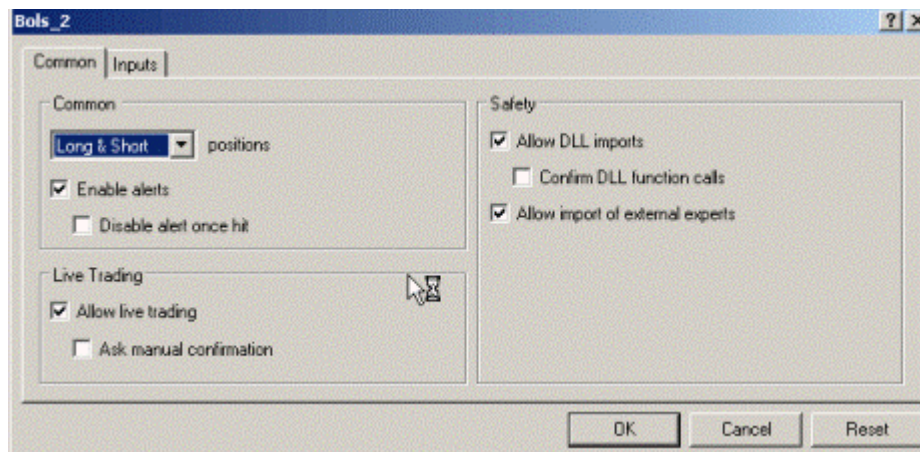
8. Once you have done that close all the folders down and open your metatrader account.

9. You should now see the 'grey' ForexDetector under the experts tab.

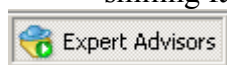


10. Open a new chart (Eur/Usd 30 minutes) and drag the grey Forex Detector icon onto the chart.

11. Right click on the chart, navigate to expert properties and tick the following boxes.



12. Click the 'expert advisors' tab on the top toolbar you should now have a smiling face in the top right of your chart, the system is now working.



This is what your chart should look like (below) once you have set it up correctly, if you have a smiling face in the top right corner the system is scanning for an entry and will begin trading when it finds a suitable entry point.



EXPERT PROPERTIES

The expert properties are where you can change the systems settings, this may be necessary if we send out an upgrade to the current settings but at the moment they are set to the correct numbers as default.

To find the settings:

1. Right click on the chart and navigate to 'expert advisors' then 'Properties'
2. Now go to inputs where they can be changed

The only one that you may want to change is the lot size, to do so double click on the 0.01 and change it to what size you wish to trade then click o.k.

USING YOUR SYSTEM

Ok, so hopefully now you have managed to set up your system and have it sitting on the Eur/Usd 30 minute chart with a smiling face in the top right corner? If you have then that's great, you have successfully set up your system and now just need to wait for it to enter a trade, this can sometimes take a day or two but is usually sooner.

Make sure you leave your computer on 24/5 and are logged into your metatrader account or the system will not be able to enter and exit trades.

If you have never used an automated system before then I will just explain a little about how they work. Basically once you have set up the system as above, the program will be scanning the market for an good entry point, there is no point just entering anywhere, it is looking for a high probability trade and this is the reason it can sometimes take a day or so to enter.

Once it finds this entry point it will now automatically execute a trade on your metatrader account. You will see a series of red or blue arrows appear on the chart depending on whether it has entered a buy or sell, then below the chart you will see the open trade and pending trade (or trades) on the trades tab.

Once the system has opened a trade it will also close the trade automatically, some trades can stay open for a few days and others may be closed within a few minutes depending on what the market is doing. Once the trade is closed it can then be viewed under the 'Account History' tab along with all the other closed trades and a running total of your profit.

TROUBLESHOOTING.

Q. I DON'T HAVE A SMILING FACE IN THE TOP RIGHT CORNER OF MY CHART?

A. If you dont have a smiling face in the top right corner of the chart then you may have 1 of the following.

1. A sad face - If you have a sad face then you have not ticked the 'allow live trading' under the expert properties tab, right click on the chart then click to 'expert advisors' then properties, now under the input tab make sure you have ticked 'allow live trading' the sad face should now turn to a smiling face and start trading.

2. A cross in the top right corner - This is a simple fix, just click the 'expert advisor' tab on the top toolbar and the cross should turn to a smiling face.

Q. MY EA ICON LOCATED UNDER THE EXPERT ADVISORS TAB IS GREY?

A. When you purchase an EA you are almost always given the .ex4 file this is to prevent you seeing the source code and thus being able to copy the program and is the reason why it shows as a grey icon

under the expert advisor. It does not influence in any way the function of the adviser, but is simply protection against piracy copies.

Q. IM GETTING AN ERROR MESSAGE WITH THE EXPERT ADVISOR FILE?

A. 1. DO NOT TRY AND OPEN THE .EX4 FILE ONCE IT IS ON YOUR DESKTOP
2. GO TO 'START' (usually bottom left)
3. CLICK 'MY COMPUTER'
4. DOUBLE CLICK 'LOCAL DISK C:'
5. DOUBLE CLICK THE 'PROGRAM FILES' FOLDER
6. DOUBLE CLICK ON THE 'METATRADER' FOLDER
7. DOUBLE CLICK ON THE 'EXPERTS FOLDER'
8. Now you have the experts folder open you need to go back to .ex4 file that is sitting on your desktop and drag it into this folder.
9. CLOSE DOWN ALL FOLDERS AND RESTART YOUR METATRADER PLATFORM
10. YOU SHOULD NOW BE ABLE TO FIND YOUR EXPERT ADVISOR UNDER THE EXPERTS TAB IN METATRADER.

Q. I CANNOT FIND THE FOREX DETECTOR ICON UNDER THE EXPERTS TAB IN METATRADER?

A. You must have placed the file in the wrong folder, make sure it is in C:/programfiles/metatrader/experts then restart your metatrader platform.

Hope you enjoy the system and the money that you will be making from it, please don't hesitate to contact us with any queries or problems you may have, we are here to help and our support staff are available at all times.

Thanks

Forex Detector Team.